

Goat Packing ADVISORY



The area you are packing in has an established herd of native bighorn sheep which are susceptible to diseases carried by domestic goats, domestic sheep, and mouflan sheep. These domestic animals can transfer diseases like Bacterial pneumonia (*Pasteurella*), *Muellerius* lungworm, pinkeye, Blue Tongue, and soremouth which can be fatal to bighorn sheep.

You can help to minimize their susceptibility by:

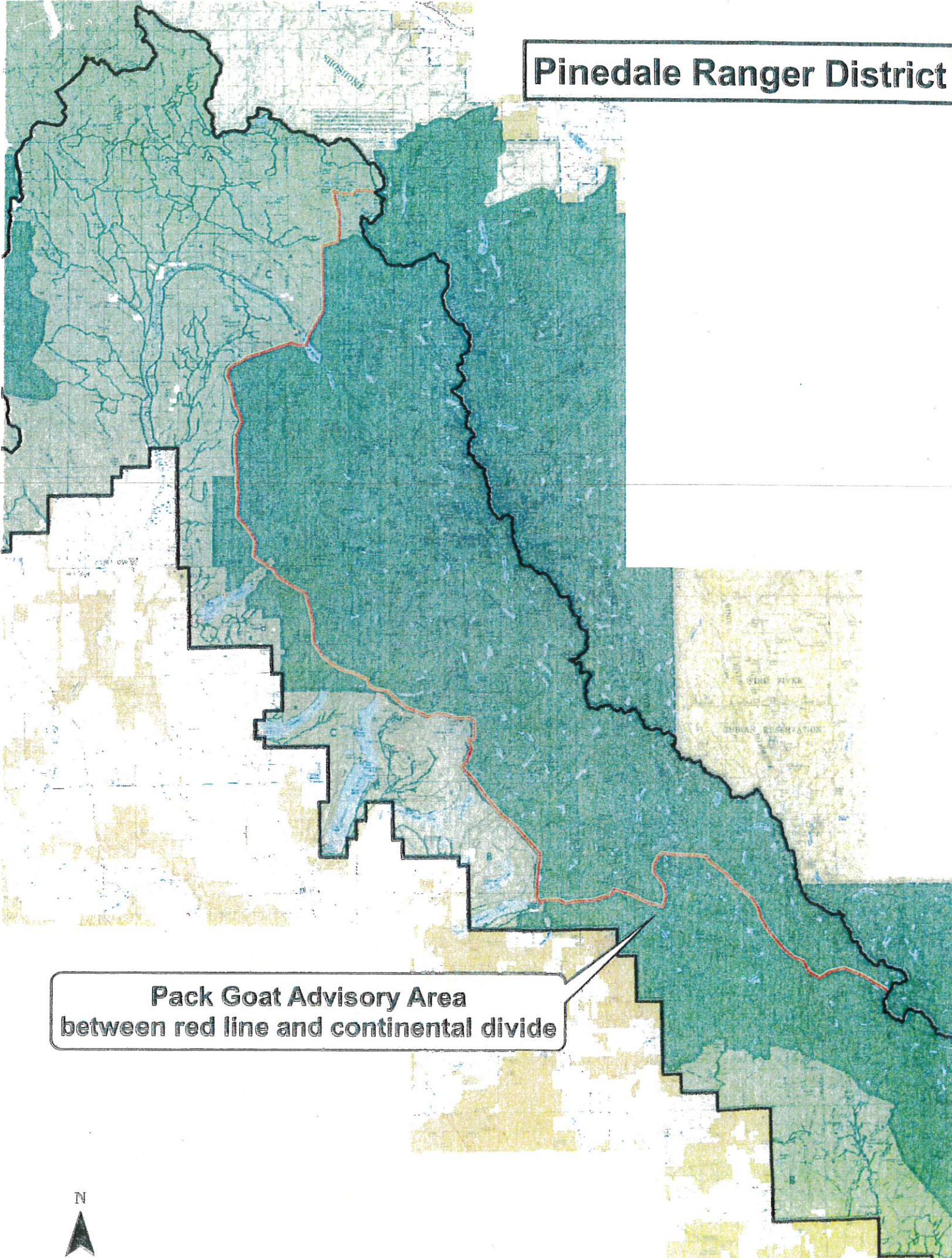
- Avoiding direct contact with wild bighorn sheep.
- Using only healthy animals on your trip.
- Following the state's regulations for your animals [eg. maintaining a current Certificate of Veterinary Inspection (CVI) and/or Import permit for out-of-state visitors with packgoats].
- Maintaining control of your animals on the trail, and at night (lead ropes in the day and tethers/hobbles at night are recommended).
- Rotating your areas of use for feeding and bedding.

Thank you for your cooperation and assistance in maintaining a healthy wild bighorn sheep herd in this area.



Bridger-Teton National Forest
Pinedale Ranger District
In partnership with
Wyoming Game and Fish Department

Pinedale Ranger District



**Pack Goat Advisory Area
between red line and continental divide**

